

# Hurricane Resource Guide

*Compiled by AgriLife Marketing and Communications*





# Areas of Expertise

*This guide serves as a collection of important Texas A&M AgriLife Extension resources and experts for media. This is a central point of contact for media inquiries regarding hurricane and disaster preparedness.*

- 3 AgriLife Hurricane Resource Topics**
- 4 Disaster Preparedness & Recovery Publications**
- 5 AgriLife Today Publications on Hurricanes**
- 6 AgriLife Today Publications on Flooding**
- 7 Hurricanes and Disaster**
- 8 Water Resources and Conservation**
- 9 Community Health**
- 10 Ecology and Infrastructure**
- 11 Flooding and Livestock**
- 12 Flooding and Crops**



# AgriLife Hurricane Resource Topics

## Our Mission

For more than 100 years, the Texas A&M AgriLife Extension Service has improved Texans' lives with innovative, science-based solutions and education in communities across the state.





# Disaster Preparedness & Recovery Publications

## **Texans, Get Ready! Be Prepared to Survive and Recover from a Disaster**

You can help protect yourself and your household during and immediately after a catastrophe by making a disaster plan and a disaster kit. You and all members of your household need to be able to take care of yourselves without outside help for at least 3 days. | [texashelp.tamu.edu](https://www.texashelp.tamu.edu)

## **Protecting Your Home From Wind Damage**

In extreme wind storms, the force of the wind alone can cause weak places in your home to fail. Experts who study the durability of homes have found four areas that should be checked for weakness—windows, doors, the roof, and if you have one, the garage door. | [texashelp.tamu.edu](https://www.texashelp.tamu.edu)

## **How to Build a Grab-and-Go Box**

Recent natural disasters have emphasized the importance of emergency preparedness. Everyone should have individual and family evacuation plans in place. | [texashelp.tamu.edu](https://www.texashelp.tamu.edu)

## **Emergency Food and Water Supplies**

Knowing how to safely handle food and water in the immediate few days after the disaster can reduce stress, worry and inconvenience. | [texashelp.tamu.edu](https://www.texashelp.tamu.edu)

## **Hurricane Evacuation Planning for People with Special Needs**

Texans with disabilities or special needs are encouraged to prepare for hurricane season and other disasters by planning ahead of time. | [texashelp.tamu.edu](https://www.texashelp.tamu.edu)

## **Additional Disaster Supplies and Tips for Individuals with Diabetes**

Have at least a 2-week supply of daily essentials, supplies, and medicines | [texashelp.tamu.edu](https://www.texashelp.tamu.edu)

## **After a Disaster Guide Book**

This disaster recovery guide provides simple information on how individuals, families and businesses can recover from a disaster such as a wildfire, hurricane, severe weather and more. | [texashelp.tamu.edu](https://www.texashelp.tamu.edu)

## **Managing Fire Ants after a Flood**

When dealing with imported fire ants in flood water, care must be taken to avoid being stung by ants floating in colony “rafts”. | [texashelp.tamu.edu](https://www.texashelp.tamu.edu)

## **Managing Mosquitos after a Flood**

After a severe storm, mosquito populations can explode, and the diseases they carry can be a danger to humans. | [texashelp.tamu.edu](https://www.texashelp.tamu.edu)



# AgriLife Today Publications on Hurricanes

## **Keys to food safety during power outages**

What to do when your refrigerator stops cooling | [agrilifetoday.tamu.edu](http://agrilifetoday.tamu.edu)

## **AgriLife Extension reminding Texans to be prepared during hurricane season**

With heavy rains, strong winds and flooding expected along the Texas Gulf Coast, the Texas A&M AgriLife Extension Service is urging Texans to make emergency and disaster preparations for themselves and their families this hurricane season | [agrilifetoday.tamu.edu](http://agrilifetoday.tamu.edu)

## **AgriLife Extension: Texans should prepare for flooding, high winds**

Texas A&M AgriLife Extension Service experts are asking Texans to take measures to prepare their houses, farms and ranches for what may come | [texashelp.tamu.edu](http://texashelp.tamu.edu)

## **AgriLife Extension offers hurricane preparedness, recovery information**

With June 1 marking the start of hurricane season, the Texas A&M AgriLife Extension Service is reminding Texans the agency provides a wealth of disaster and emergency preparedness and recovery information | [agrilifetoday.tamu.edu](http://agrilifetoday.tamu.edu)

## **Four food safety tips when cooking without power**

Food safety key when weather disasters cause a power disruption | [agrilifetoday.tamu.edu](http://agrilifetoday.tamu.edu)

## **National Preparedness Month: How do I prepare for a disaster or emergency?**

Texas A&M AgriLife Extension Service offers a wealth of information to help families and landowners prepare | [agrilifetoday.tamu.edu](http://agrilifetoday.tamu.edu)

## **AgriLife Extension promoting hurricane preparation for livestock, equine owners**

Texas A&M AgriLife Extension Service experts have produced videos and publications to help ranchers and other horse and/or livestock owners prepare for a hurricane | [agrilifetoday.tamu.edu](http://agrilifetoday.tamu.edu)



# AgriLife Today Publications on Flooding

## **Big Texas cities have less land to absorb floods**

Land use, climate change making flood mitigation in Texas cities more difficult | [agrilifetoday.tamu.edu](http://agrilifetoday.tamu.edu)

## **Water wells should be tested after a flood**

AgriLife Extension expert: Assume flooded well water is contaminated until tested | [agrilifetoday.tamu.edu](http://agrilifetoday.tamu.edu)

## **New stormwater wetland will reduce flooding, pollution**

AgriLife Extension staff, volunteers plant wetlands at Houston Botanic Garden | [agrilifetoday.tamu.edu](http://agrilifetoday.tamu.edu)

## **Residents, AgriLife Extension, others work to 'Harvey-proof' Houston-area community**

Effort leads to new Exploration Green nature park that will detain floodwater, clean runoff | [agrilifetoday.tamu.edu](http://agrilifetoday.tamu.edu)

## **AgriLife Extension experts offer advice on livestock safety, care after Harvey**

Livestock in the wake of Hurricane Harvey are still at risk for lack of feed, injury or disease, said Texas A&M AgriLife Extension Service specialists | [agrilifetoday.tamu.edu](http://agrilifetoday.tamu.edu)

## **Stormwater best management practices at Texas A&M AgriLife Dallas center show statewide praise**

Low impact development practices shown to reduce stormwater runoff, pollutants | [agrilifetoday.tamu.edu](http://agrilifetoday.tamu.edu)

## **Livestock safety paramount during flooding**

Farmers, ranchers should have emergency plan to protect animals from high waters | [agrilifetoday.tamu.edu](http://agrilifetoday.tamu.edu)



TEXAS A&M  
**AGRI LIFE** EXPERTS ON  
**Hurricanes and Disaster**

**MONTY DOZIER**

**Director of Disaster Assessment and Recovery Team, Disaster, Assessment & Recovery, Texas A&M AgriLife Extension Service**

Monty Dozier is an expert in disaster preparation and recovery. He leads the response and recovery efforts of the Texas A&M AgriLife Extension Service.

Contact: 979-845-6800

[monty.dozier@ag.tamu.edu](mailto:monty.dozier@ag.tamu.edu)

**BRYAN DAVIS**

**County Extension Agent, Disaster, Assessment & Recovery, Texas A&M AgriLife Extension Service**

Bryan Davis is an expert in disaster recovery and provides leadership for preparedness and recovery from natural disasters.

Contact: 830-303-3889

[bryan.davis@ag.tamu.edu](mailto:bryan.davis@ag.tamu.edu)



TEXAS A&M  
**AGRI LIFE** EXPERTS ON

# Water Resources and Conservation



## **DIANE BOELLSTORFF**

**Professor and Extension Water Resources Specialist, Texas A&M College of Agriculture & Life Sciences , Texas A&M AgriLife Extension Service**

Diane Boellstorff is an expert in water resource management, water conservation, and watershed protection planning.

Contact: 979-458-3362

[diane.boellstorff@ag.tamu.edu](mailto:diane.boellstorff@ag.tamu.edu)

## **JOEL PIGG**

**Extension Program Specialist II, Texas A&M AgriLife Extension Service**

Joel Pigg is an expert in water sanitation and water well safety.

Contact: 979-845-1461

[j-pigg@tamu.edu](mailto:j-pigg@tamu.edu)

## **DAVID SMITH**

**Extension Program Specialist I, Texas A&M AgriLife Extension Service**

David Smith is an expert in water resources and conservation and landscape irrigation.

Contact: 979-862-1989

[davidsmith@tamu.edu](mailto:davidsmith@tamu.edu)





# TEXAS A&M AGRI LIFE EXPERTS ON Community Health

## ANDREA VALDEZ

**County Extension Agent, Texas A&M AgriLife Extension Service**

Andrea Valdez is an expert in community health and oversees healthy cooking and stress reduction programs.

Contact: 956-383-1026

[andrea.valdez@ag.tamu.edu](mailto:andrea.valdez@ag.tamu.edu)

## MATTHEW TAYLOR

**Assistant Professor, Texas A&M College of Agriculture & Life Sciences, Texas A&M AgriLife Extension Service**

Matthew Taylor is an expert in food preservation and foodborne pathogens.

Contact: 979-845-7678

[matt\\_taylor@tamu.edu](mailto:matt_taylor@tamu.edu)



TEXAS A&M  
**AGRI**LIFE EXPERTS ON  
**Ecology and Infrastructure**

**RUSTY FEAGIN**

**Professor of Ecology and Conservation Biology**, *Texas A&M College of Agriculture & Life Sciences*

Rusty Feagin is an expert in coastal ecology and engineering and has scientific work focused on the sustainable management of coasts.

Contact: 979-862-2612

[russel.feagin@ag.tamu.edu](mailto:russel.feagin@ag.tamu.edu)

**FOUAD JABER**

**Professor & Extension Specialist**, *Texas A&M College of Agriculture & Life Sciences*, *Texas A&M AgriLife Extension Service*

Fouad Jaber is an expert in integrated water resources management.

Contact: 972-952-9672

[f-jaber@tamu.edu](mailto:f-jaber@tamu.edu)



TEXAS A&M  
**AGRI LIFE** EXPERTS ON  
**Flooding and Livestock**



**THOMAS HAIRGROVE**

**Professor and Extension Veterinary Specialist, Texas A&M College of Agriculture & Life Sciences, Texas A&M AgriLife Extension Service**

Thomas Hairgrove is an expert in the impact of flooding and hurricanes on livestock.

Contact: 979-458-3216

[thomas.hairgrove@ag.tamu.edu](mailto:thomas.hairgrove@ag.tamu.edu)

**JASON CLEERE**

**Associate Professor & Extension Beef Cattle Specialist, Texas A&M College of Agriculture & Life Sciences, Texas A&M AgriLife Extension Service**

Jason Cleere is an expert in how floods affect livestock, specifically cattle.

Contact: 979-845-6931

[jason.cleere@ag.tamu.edu](mailto:jason.cleere@ag.tamu.edu)

**SONJA SWIGER**

**Professor and Extension Entomologist, Texas A&M College of Agriculture & Life Sciences, Texas A&M AgriLife Extension Service**

Sonja Swiger is an expert in livestock, veterinary entomology, and managing mosquitos during floods.

Contact: 254-968-4144

[slsruiger@ag.tamu.edu](mailto:slsruiger@ag.tamu.edu)



## TEXAS A&M AGRI LIFE EXPERTS ON Flooding and Crops



### JOURDAN BELL

**Associate Professor, Agronomist, Texas A&M AgriLife Extension Service**

Jourdan Bell is an expert in agronomic management. She has conducted research on water stress in drylands.

Contact: 806-677-5663

[jourdan.bell@ag.tamu.edu](mailto:jourdan.bell@ag.tamu.edu)

### BRIANA WYATT

**Assistant Professor, Texas A&M College of Agriculture & Life Sciences, Texas A&M AgriLife Extension Service**

Briana Wyatt is an expert in soil physics and hydrology. She has conducted research on the hydrological cycle and soil health.

Contact: 979-458-2747

[briana.wyatt@ag.tamu.edu](mailto:briana.wyatt@ag.tamu.edu)

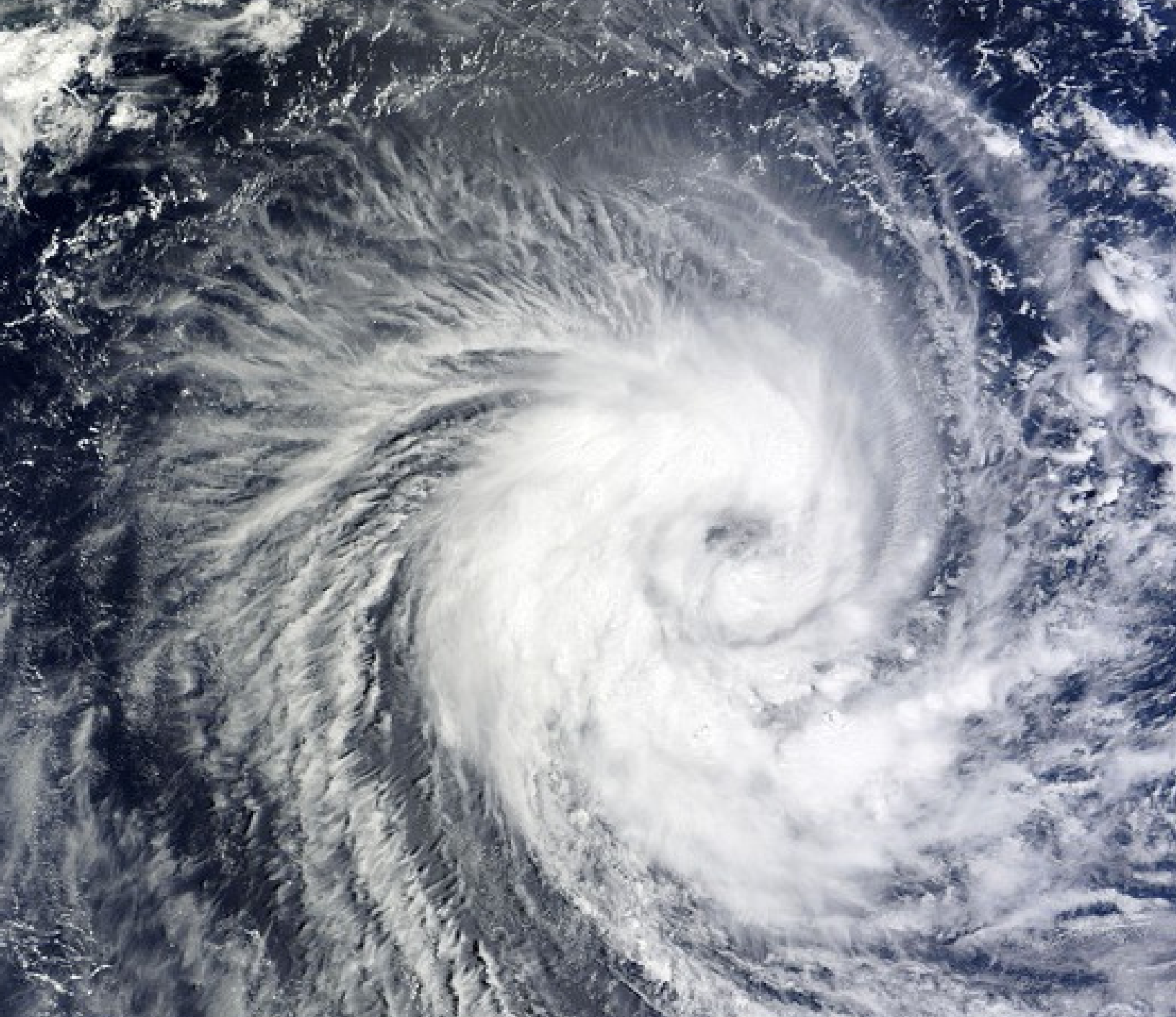
### VANESSA CORRIHER-OLSON

**Professor and Extension Forage Specialist, Texas A&M College of Agriculture & Life Sciences, Texas A&M AgriLife Extension Service**

Vanessa Corridor-Olson is an expert in forage production and how floods threaten yields.

Contact: 903-834-6191

[VACorriher@ag.tamu.edu](mailto:VACorriher@ag.tamu.edu)



TEXAS A&M  
**AGRILIFE**  
EXTENSION

[agriflifeextension.tamu.edu](http://agriflifeextension.tamu.edu) | [agriflifetoday.tamu.edu](http://agriflifetoday.tamu.edu)